



Sungei Mutiara - Drilling offshore

Sungei Mutiara is a purpose built site investigation barge designed for operations in water depth of upto 45m.

The vessel was originally built in 1993 with the conversion and modification completed in 2001.

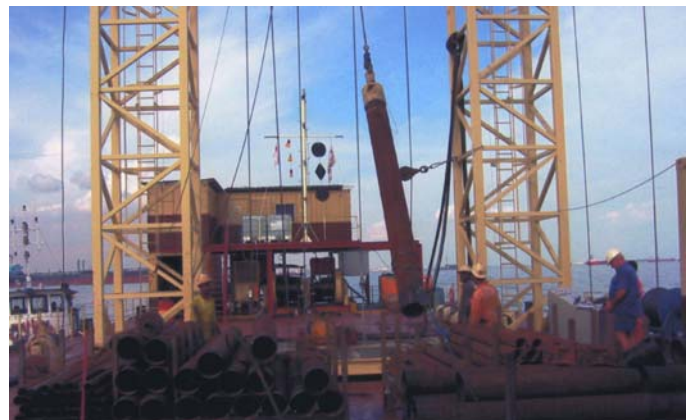
Principal particulars:

L.O.A.	49.90 m
Breadth	15.25 m
Depth	4.00 m

Sungei Mutiara is designed to allow maximum flexibility in the choice of site investigation technique.

Her capabilities include:

- Borehole drilling and sampling using either conventional nearshore drilling techniques or offshore API drillpipe and wireline sampling methods.
- Seabed cone penetration testing – Fugro designed wheeldrive CPT system is deployed through the central moonpool.
- Vibrocoring
- Grab sampling



Sungei Mutiara - Drillfloor operations

Sungei Mutiara – Equipment / facilities onboard

- Drilling and testing performed through central moonpool using twin tower drilling derrick. Drilling winches and variable speed / torque rotary swivel powered by custom built hydraulic power pack. All equipment operated from a central console.
- 4 drum diesel driven winches fitted with 4 nos of 2000 kg anchors.
- 2 nos office containers, 1 equipment store and 1 workshop with covered sample preparation and examination area.